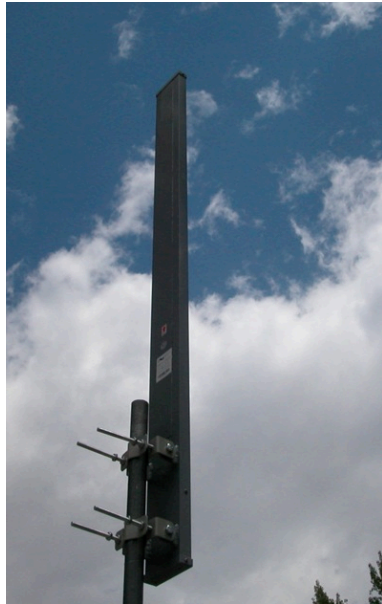


OMNI ANTENNA 930 - 960 MHz


Features of the 930 MHz Omni Directional Antenna

- True to Specification Performance to minimize outside interference
- High Performance Design Eliminates Nulls - Wave Guide Design
- Extra Strong Aluminum Construction - Waterproof
- Powder Coated Enclosure for rough environments
- Horizontal Polarization - IEEE 802.11 Compatible
- Lifetime Warranty 7/16 DIN Connector
- For use with 1.5" - 3.5" Diameter mast/poles (40 -90 mm)
- 45 to +70 Degrees Centigrade Operating Temperatures
- DC Ground for Lightning Protection
- Rugged Double Clamping Hardware System SS Hardware
- Use for 900 MHz Networks - WISP - ISM - NLOS



Shipped Direct from Manufacturer

One Year Warranty, Repair or Replacement, Provided by Manufacturer

	OMNI	NLOS
		Base Station
		
SPECIFICATIONS		
Part Number	OM9306H	
Frequency Range	930 - 960 MHz	
Gain	6 dBi	
VSWR	1:5:1 Typical	
Impedance	50 Ohms	
Maximum Power	250 Watts	
Beamwidth	27.5 E	
PIM	<107	
Structure	Aluminum One Element	
Wind Velocity	130 mph/210 km	
Length	47.24"/1200 mm	
Weight	16.96 #/7.7 kg	
DC Ground	Photo	may not be exact model
		www.1wirelessway.com