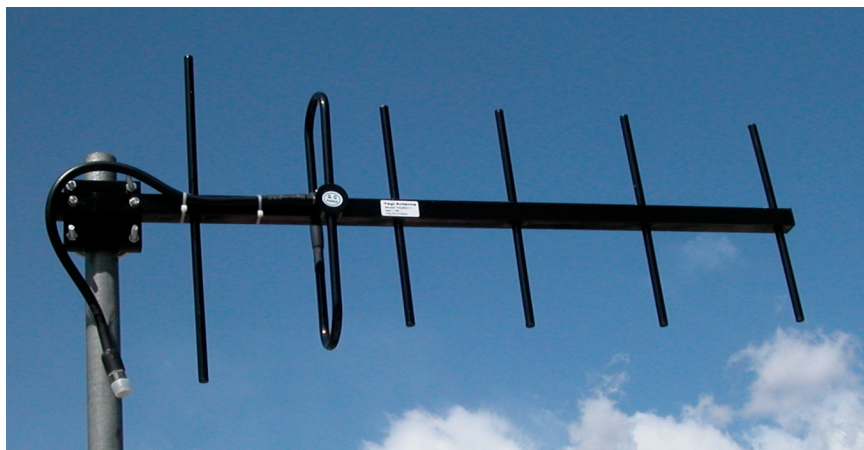


## YAGI ANTENNA 450 - 470 MHz

**EXTREME ENVIRONMENTS - EXTRA HEAVY DUTY SERIES**  
Rugged Construction for the most harsh and severe installations

### Features of the 450 MHz Directional Yagi

- Heavy Duty Stainless Steel Construction
- Solid Iron Mounting Bracket
- 360 Degree Weld Elements to Boom
- Black Polyester Powder Coat Finish
- Lifetime Warranty Female N Connector
- High Quality LMR400 Cable
- Waterproof Gamma Match
- PVC Heat Shrink on Connector
- Vertical or Horizontal Polarization
- Gains Available: 9, 11, 12, 14 dBi
- Cable Lengths Available: Standard 2', 15' or 25'
- Minimum Order Requirements
- [www.1wirelessway.com](http://www.1wirelessway.com)



Shipped Direct from Manufacturer

One Year Warranty, Repair or Replacement, Provided by Manufacturer

**NLOS** None Line of Site Applications



### SPECIFICATIONS

<b>Part Number</b>	<b>YA45014W</b>
<b>Frequency Range</b>	216 - 226 MHz
<b>Gain</b>	14 dBi
<b>Front to Back Ratio</b>	16 dB minimum
<b>Beamwidth</b>	34H 28V
<b>VSWR</b>	1.5:1 Typical
<b>Input Impedance</b>	50 Ohms
<b>Maximum Power</b>	150 Watts
<b>Connector Interface</b>	N Type Female
<b>Windload</b>	210 KM/130MPH
<b>Polarization</b>	Vertical or Horizontal
<b>Lightning Protection</b>	Direct Ground
<b>Structure</b>	11 Elements
<b>Length</b>	78"/1980mm
<b>Width</b>	14.4"/365mm
<b>Depth</b>	3.15"/89mm
<b>Weight</b>	5.5#/2.5kg
<b>Mast Sizes Compatible</b>	1.5"-2.0" 40-50mm
<b>Double U Bolt Mounting</b>	S/S Hardware
<b>Standard Cable Length</b>	2'/610mm
<b>15' Cable Length</b>	<b>YA45014W-15</b>
<b>25' Cable Length</b>	<b>YA45014W-25</b>

450 MHz Photo may not be exact model